



ECL 10 / ECL 10M

**Economic Power- Electric Stacker
Compact and Reliable Design**

INTRODUCTION

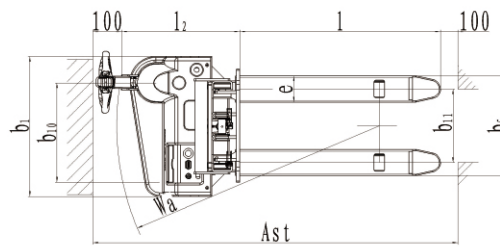
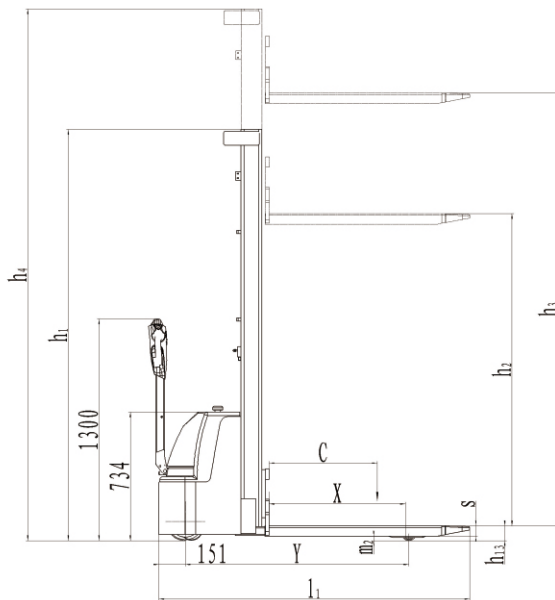
The ECL10 / ECL10M is an economic walkie-electric stacker, with rated capacity of 1000kg and lifting height 1600mm, 2000mm and 2900mm.

The compact and light design is suitable for a variety of low duty applications in warehouses.

ADVANTAGES

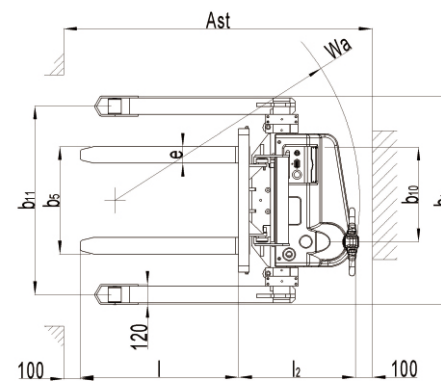
- Ideal solution for low-duty applications.
- Built-in charger for high autonomy.
- Battery discharge indicator with automatic lift cut-off function for higher battery lifetime.
- 4-wheel design with sideways tiller for high stability and perfect view.

ECL10



Technical drawing of a chair showing dimensions and labels. The drawing includes the following dimensions and labels:

- h_1 : Total height of the chair.
- h_2 : Height of the seat.
- h_3 : Height of the backrest.
- h_4 : Height of the armrest.
- 40 : Width of the seat.
- s : Distance from the front edge of the seat to the front edge of the base.
- Q : Distance from the front edge of the seat to the front edge of the backrest.
- c : Distance from the front edge of the seat to the front edge of the base.
- x : Distance from the front edge of the seat to the front edge of the backrest.
- Y : Distance from the front edge of the seat to the front edge of the base.
- m_2 : Distance from the front edge of the seat to the front edge of the backrest.
- 151 : Distance from the front edge of the seat to the front edge of the base.
- 734 : Distance from the front edge of the seat to the front edge of the backrest.
- 1300 : Total width of the chair.



Type sheet for industrial truck acc. to VDI 2198

1KG=2.2LB 1INCH=25.4MM

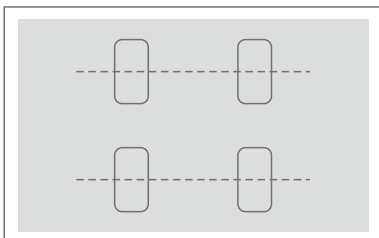
Distinguishing mark	1.2	Manufacturer's type designation		ECL	ECL	ECL	ECL	ECL	ECL	
				1016	1020	1029	1016M	1020M	1029M	
	1.3	Drive		Battery						
	1.4	Operator type		Pedestrian						
	1.5	Load Capacity / rated load	Q(Kg)	1000						
	1.6	Load centre distance	c(mm)	600						
	1.8	Load distance ,centre of drive axle to fork	x(mm)	821		809		745		733
	1.9	Wheelbase	Y(mm)	1281						
	Weight	2.1	Service weight	kg	430	450	510	676	696	756
2.2		Axle loading, laden front/rear	kg	550/880	560/890	580/930	736/940	756/940	786/970	
2.3		Axle loading, unladen front/rear	kg	335/105	340/110	385/125	500/176	500/196	530/226	
Tyres, chassis	3.1	Tires		Polyurethane (PU)						
	3.2	Tire size, front	ØxW (mm)	Ø 220 × 70						
	3.3	Tire size, rear	ØxW (mm)	Ø 80 × 93						
	3.4	Additional wheels(dimensions)	ØxW (mm)	Ø 124 × 60						
	3.5	Wheels, number front/rear(x=driven wheels)		1x+1 / 2						
	3.6	Tread, front	b10 (mm)	529						
	3.7	Tread, rear	b11 (mm)	420/ 535			1130/1500			
Dimensions	4.2	Lowered mast height	h1 (mm)	1950	2350	1950	1935	2335	1935	
	4.3	Free Lift height	h2 (mm)	1530	1930	70	1530	1930	70	
	4.4	Lift	h3 (mm)	1530	1930	2840	1530	1930	2840	
	4.5	Extended mast height	h4 (mm)	1950	2350	3325	2120	2520	3420	
	4.9	Height of tiller in drive position min./ max.	h14 (mm)	785 / 1300						
	4.15	Height, lowered	h13 (mm)	85			40			
	4.19	Overall length	l1 (mm)	1800			1638			
	4.2	Length to face of forks	l2 (mm)	650			688/ 700			
	4.21	Overall width	b1 (mm)	800			1250			
	4.22	Fork dimensions	s/e/l (mm)	60/150/1150 ¹⁾			35/100/950 ¹⁾			
	4.25	Distance between fork- arms	b5 (mm)	570/ 685			282 - 800			
	4.32	Ground clearance, centre of wheelbase	m2 (mm)	29			25			
	4.33	Aisle width for pallets 1000X1200 crossways	Ast (mm)	2312		2315	2336		2341	
	4.34	Aisle width for pallets 800X1200 lengthways	Ast (mm)	2236		2245	2290		2300	
	4.35	Turning radius	Wa (mm)	1485						
Addition data Performance data	5.1	Travel speed, laden/ unladen	km/h	4.3 / 4.5						
	5.2	Lift speed, laden/ unladen	m/s	0,11/ 0,16						
	5.3	Lowering speed, laden/ unladen	m/s	0,13/ 0,11						
	5.8	Max. gradeability, laden/ unladen	%	5/10						
	5.10	Service brake		Electromagnetic						
Electric- Motor	6.1	Drive motor rating S2 60min	kW	0.45						
	6.2	Lift motor rating at S3 7.5%	kW	2.2						
	6.3	Battery acc. to DIN 43531/ 35/ 36 A, B, C, no		no						
	6.4	Battery voltage, nominal capacity K5	V/Ah	2 X 12/ 85						
	6.5	Battery weight	kg	2 X 25						
	6.6	Energy consumption acc. to VDI cycle	kWh/h	0.68	0.73		0.71	0.76		
Additional data	8.1	Type of drive control		DC-Speed – Control						
	8.4	Sound level at driver's ear acc. to EN 12053	dB(A)	< 70						

1)Optional: 35/ 100/ 1150
2)Optional: 2x12V / 106 Ah

KEY FEATURES



- 1 The built-in charger makes operations more autonomy and increases the operating range.



- 2 4-Wheel design with sideways tiller for excellent view and maneuverability as well as high stability.



- 3 Robust mast with real mast profiles for perfect stability, accuracy and high lifetime.



- 4 Proofed and ergonomic emergency button and discharge indicator, more robust and reliable than other. The included automatic battery protection ensures high lifetime for the batteries.

- 5 Proofed components such as sensors, micro-switches, controller and hydraulic power- pack from international brands.

- 6 Fulfilling the actual valid European standards, also in ISO 13849, performance level.

- 7 Ideal economic solution for all indoor low duty and occasional stacking operations.



- 8 2x12V 85Ah powerful main-tenance free batteries (option 2x12V 106Ah).



- 9 Robust but economic handle with steel housing and plastic coating ensures reliable and comfortable operation.

- 10 2 single mast versions (1600mm, 2000mm lift height) and one 2-stage Duplexmast with 2900mm lift height (All with perfect view through the mast). b5= 685mm and straddle leg version optional. (b5=570mm standard)

NOBLIFT

NOBLELIFT CHINA

Add: No. 528, Jing Yi Road Economic Development Zone,
Changxing zhejiang China PC: 313100
Tel: 86-572-6210776 6210788 Fax: 86-572-6210777 6128612
www.noblelift.com Email: info@noblelift.com

NOBLELIFT EUROPE GMBH Spare Parts Center

Add: Borsigstrae 9D-93092 Barbing Germany
Tel: +49 9401 607930 Fax: +49 9401 6079329
www.noblelift-europe.com Email: inter@noblelift-europe.com

AMERICAN NOBLELIFT CORP.

Add: 1810 S. Milliken Ave., Ontario, CA 91761, USA
Tel: +1 909 390 6258 Fax: +1 909 390 5114
Toll Free #: (888) 662-5354
www.nobleliftus.com Email: info@nobleliftus.com

SPARE PARTS CENTER

Borsigstrae 9D-93092 Barbing Germany
Tel: +49 (0) 9401 911 330 Fax: +49 (0) 9401 911 3329
Email: parts@noblelift-europe.com