



PS-Series

Heavy Duty Stacker for Various Stacking Operations

INTRODUCTION

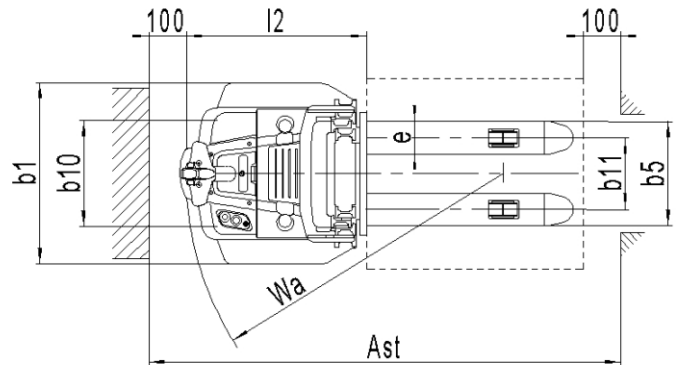
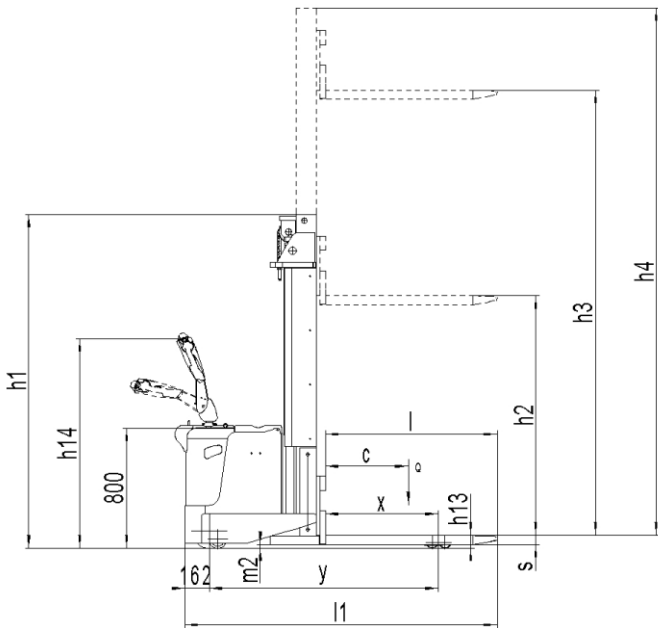
The PS- Series ensures with high performance through AC drive technology in intensive stacking operations with capacities up to 1500kg / 2000kg with 2- and 3-stage masts.

The optional available foldable platform is the best choice if the truck is used in larger warehouse with longer travelling distances.

ADVANTAGES

- High capacity of 1500kg / 2000kg.
- Noblelift AC drive system.
- Electric steering (optional).
- Robust 2- and 3stage masts for lift heights up to 6000mm lift height.
- Foldable platform and protective arms (optional).

PARAMETERS



Type sheet for industrial truck acc. to VDI 2198

1KG=2.2LB 1INCH=25.4MM

Distinguishing mark	1.2	Manufacturer's type designation		PS 1550 ¹⁾
	1.3	Power (battery ,diesel, petrol, gas, manual)		Battery
	1.4	Operator type		Pedestrian
	1.5	Load Capacity / rated load	Q(t)	1.5
	1.6	Load centre distance	c(mm)	600
	1.8	Load distance ,centre of drive axle to fork	x(mm)	765
	1.9	Wheelbase	Y(mm)	1519
Weight	2.1	Service weight	kg	1596
	2.2	Axle loading, laden front/rear	kg	1345/1663
	2.3	Axle loading, unladen front/rear	kg	955/553
Tyres, chassis	3.1	Tires		Polyurethane (PU)
	3.2	Tire size, front	Ø x w (mm)	Ø 230×75
	3.3	Tire size, rear	Ø x w (mm)	Ø 80× 70
	3.4	Additional wheels(dimensions)	Ø x w (mm)	Ø 124x60
	3.5	Wheels, number front/rear(x=driven wheels)		1x+2/4
	3.6	Tread, front	b10 (mm)	750
	3.7	Tread, rear	b11 (mm)	395
Dimensions	4.2	Lowered mast height	h1 (mm)	2220
	4.3	Free lift height	H2 (mm)	1660
	4.4	Lift	h3 (mm)	4915
	4.5	Extended mast height	h4(mm)	5520
	4.9	Height of tiller in drive position min./ max.	h14(mm)	1370/945
	4.15	Height, lowered	h13 (mm)	85
	4.19	Overall length	l1 (mm)	2180
	4.20	Length to face of forks	l2 (mm)	1030
	4.21	Overall width	b1 (mm)	1000
	4.22	Fork dimensions	s/e/l (mm)	60/180/1150
	4.25	Distance between fork- arms	b5 (mm)	575
	4.32	Ground clearance, centre of wheelbase	m2 (mm)	25
	4.33	Aisle width for pallets 1000X1200 lengthways	Ast (mm)	2645
	4.34	Aisle width for pallets 800X1200 lengthways	Ast(mm)	2592
	4.35	Turning radius	Wa (mm)	1806
Performance data	5.1	Travel speed, laden/unladen	Km/h	5.9/6.0
	5.2	Lift speed, laden/ unladen	m/s	0.141/0.212
	5.3	Lowering speed, laden/ unladen	m/s	0.227/0.178
	5.8	Max. gradeability performance, laden/unladen	%	6/12
	5.10	Service brake		Electromagnetic
Electric- Motor	6.1	Drive motor rating S2 60min	kW	1.5
	6.2	Lift motor rating at S3 15%	kW	3.0
	6.3	Battery acc. to DIN 43531/35/36 A, B, C, no		B, 3PzS
	6.4	Battery voltage, nominal capacity K5	V/Ah	24/350
	6.5	Battery weight	kg	288
	6.6	Energy consumption acc. to VDI cycle	Kwh/h	2.06
Additional data	8.1	Type of drive control		AC Speed Control
	8.4	Sound level at driver's ear according to EN 12053	dB(A)	<70

1) Different mast versions available: 3600mm, 4000mm, 4600mm, 5500mm, 6000mm

KEY FEATURES



1 Tiller
All operating elements on the CAN tiller are easy to reach

2 Noblelift AC drive system
The AC drive system gives high performance, ensures low maintenance costs and its high efficiency, saves energy for longer operations.



3 Key-switch, emergency switch and battery discharge indicator.



4 Standard battery
Long operating time through high capacity with 3 PZS battery.



5 The robust battery cover to with storage areas for utilities or packaging- and stretch foil.

6 Electric steering (optional)
The electric steering makes the operating effortless. Maneuvering in narrow spaces becomes with the electric steering easiest.

7 2- stage and 3-stage masts up to 6000mm lift-height.



8 Optional suspension foldable platform with sideways protective arms. The ergonomically designed foldable platform in combination with its sideways protective arms makes operations faster and safer.

NOBLIFT

NOBLELIFT CHINA

Add: No. 528, Jing Yi Road Economic Development Zone,
Changxing zhejiang China PC: 313100
Tel: 86-572-6210776 6210788 Fax: 86-572-6210777 6128612
www.noblelift.com Email: info@noblelift.com

NOBLELIFT EUROPE GMBH Spare Parts Center

Add: Borsigstrae 9D-93092 Barbing Germany
Tel: +49 9401 607930 Fax: +49 9401 6079329
www.noblelifteurope.com Email: inter@noblelifteurope.com

AMERICAN NOBLELIFT CORP.

Add: 1810 S. Milliken Ave., Ontario, CA 91761, USA
Tel: +1 909 390 6258 Fax: +1 909 390 5114
Toll Free #: (888) 662-5354
www.nobleliftus.com Email: info@nobleliftus.com

SPARE PARTS CENTER

Borsigstrae 9D-93092 Barbing Germany
Tel: +49 (0) 9401 911 330 Fax: +49 (0) 9401 911 3329
Email: parts@noblelifteurope.com