



## PT 25P

**Ideal Selection for Heavy Duty and Long Distance Transportation Operations with Fixed or Foldable Platform**

### INTRODUCTION

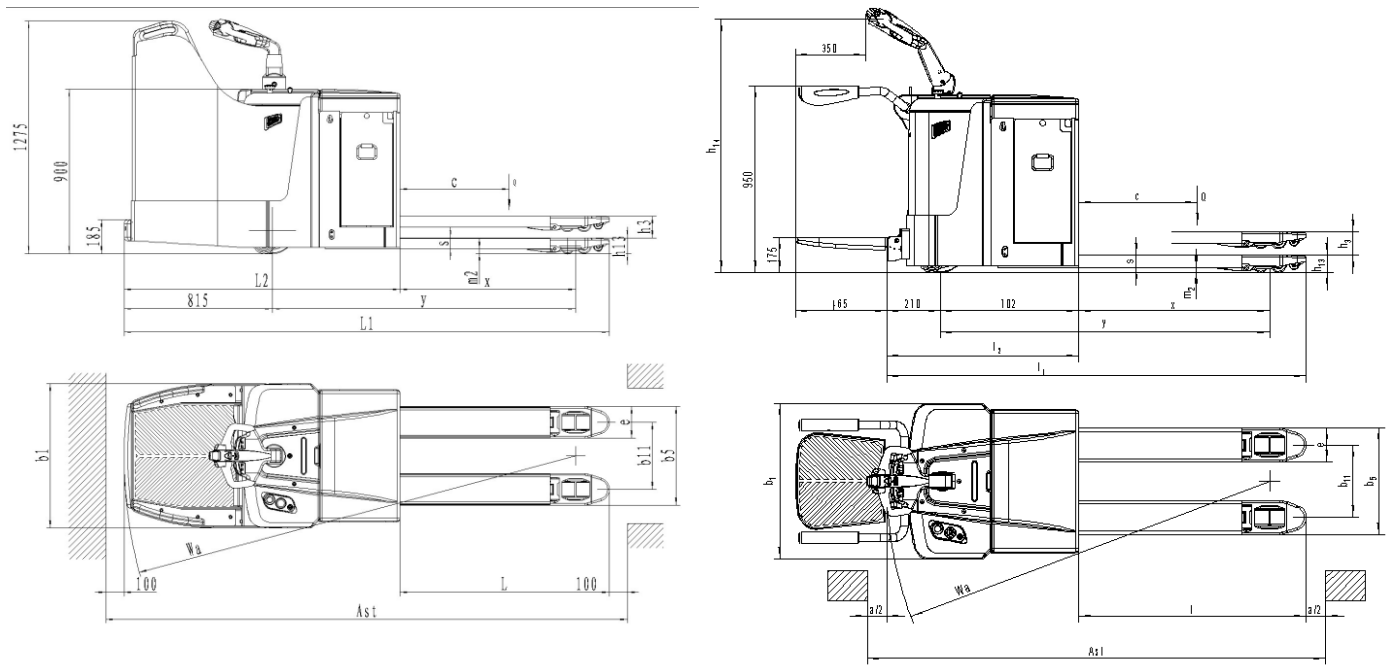
With its economic fixed or foldable platform the PT 20P / PT 25P is designed to meet the requirement of high duty transportation operations on long distances and higher travelling speed.

The fixed, very roomy, safe and ergonomic platform is the first choice for intra-logistic transportation on long distances, where on the foldable platform is space saving in narrow aisles.

### ADVANTAGES

- Powerful high quality AC drive unit.
- EPS- Electric steering system.
- High capacity 3PzS battery for long shifts.
- Sideways battery exchange compartment for quick and safe battery exchange.
- Robust and ergonomic design.
- Fixed platform or foldable platform with protective arms.

# PARAMETERS



# Type sheet for industrial truck acc. to VDI 2198

1KG=2.2LB 1INCH=25.4MM

			PT 25P (fixed platform)	PT 25P (foldable platform)
<b>Distinguishing mark</b>	1.2	Manufacturer's type designation		
	1.3	Power (battery ,diesel,petrol gas,manual)	Electric	
	1.4	Operator type	Stand	Pedestrian/Stand
	1.5	Load Capacity / rated load	Q (t)	2.5
	1.6	Load centre distance	c (mm)	24
	1.8	Load distance, centre of drive axle to fork	x (mm)	965
	1.9	Wheelbase	y (mm)	1595
<b>Weight</b>	2.1	Service weight	kg	1085
	2.2	Axle loading, laden front/rear	kg	2030/1555
	2.3	Axle loading, unladen front/rear	kg	200/885
<b>Tyres, chassis</b>	3.1	Tyres (solid rubber, superelastic, pneumatic, polyurethane)	Vulkollan®	
	3.2	Tire size, front	Ø x w (mm)	Ø 82X82
	3.3	Tire size, rear	Ø x w (mm)	Ø 250X82
	3.4	Additional wheels (dimensions)	Ø x w (mm)	Ø 124X60
	3.5	Wheels, number front/rear(x=driven wheels)		1x+2/4
	3.6	Tread, front	b10 (mm)	530
	3.7	Tread, rear	b11 (mm)	367/512
<b>Dimensions</b>	4.4	Lift height	h3 (mm)	120
	4.9	Height of tiller in drive position min. / max.	h14 (mm)	1235
	4.15	Height, lowered	h13 (mm)	85
	4.19	Overall length	l1 (mm)	2667
	4.20	Length to face of forks	l2 (mm)	185
	4.21	Overall width	b1 (mm)	790
	4.22	Fork dimensions	s/e/l (mm)	60/173/1150
	4.25	Distance between fork-arms	b5 (mm)	540/685
	4.32	Ground clearance, centre of wheelbase	m2 (mm)	25
	4.33	Aisle width for pallets 1000 x 1200 crossways	Ast(mm)	3084
	4.34	Aisle width for pallets 800X1200 lengthways	Ast (mm)	2945
	4.35	Turning radius	Wa (mm)	2479
<b>Performance</b>	5.1	Travel speed, laden/ unladen	km/h	9/12
	5.2	Lift speed, laden/ unladen	m/s	0.030/0.035
	5.3	Lowering speed, laden / unladen	m/s	0.045/0.030
	5.8	Gradeability, laden/ unladen	%	8/10
	5.10	Service brake		Regenerative
<b>Electric- Motor</b>	6.1	Drive motor rating S2 60min	kW	2.5
	6.2	Lift motor rating at S3 10%	kW	2.2
	6.3	Battery acc. to DIN 43531 /35 / 36 A, B, C, no	mm	B,3PzS
	6.4	Battery voltage, nominal capacity K5	V/ Ah	24/375
	6.5	Battery weight (minimum)	kg	300
	6.6	Energy consumption acc. to VDI cycle	KWh/h	
<b>Additional data</b>	8.1	Type of drive control	AC-Speed Control	
	8.4	Sound level at driver's ear acc. to EN 12053	dB(A)	< 70

# KEY FEATURES



- 1 Powerful high quality AC drive unit ensures high performance and low maintenance. On ramps the truck not rolls backwards.
- 2 High speed saves time and increases the handling capacity.
- 3 EPS- Electric steering system.
- 4 Ergonomic tiller and handholds. By travelling with the forks backside, one hand can ergonomically reach the grip, the other holds the tiller. For both left- handed and right handed operators.



- 5 Key-switch, emergency switch and battery discharge indicator
- 6 Diverse storage areas for stretch foils, documents or clipboards, etc.



- 7 Sideways battery exchange compartment for quick and safe battery exchange. Because the battery compartment is lifted with the forks, various exchange heights are easy to reach.
- 8 High performance 3PzS DIN-standard battery for long or multi shifts. The battery rollers minimize the forces for exchange. Exchange to the left or right side (selection).



- 9 Fixed or foldable platform with protective arms. The cushioned platforms ensure safety in all travelling conditions.
- 10 Roomy, ergonomic and safe fixed platform with rubber bumper



- 11 Foldable platform for higher flexibility in narrow spaces.

## NOBLIFT

### NOBLELIFT CHINA

Add: No. 528, Jing Yi Road Economic Development Zone, Changxing zhejiang China PC: 313100  
Tel: 86-572-6210776 6210788 Fax: 86-572-6210777 6128612  
www.noblelift.com Email: info@noblelift.com

### NOBLELIFT EUROPE GMBH Spare Parts Center

Add: Borsigstrae 9D-93092 Barbing Germany  
Tel: +49 9401 607930 Fax: +49 9401 6079329  
www.noblelifteurope.com Email: inter@noblelifteurope.com

### AMERICAN NOBLELIFT CORP.

Add: 1810 S. Milliken Ave., Ontario, CA 91761, USA  
Tel: +1 909 390 6258 Fax: +1 909 390 5114  
Toll Free #: (888) 662-5354  
www.nobleliftus.com Email: info@nobleliftus.com

### SPARE PARTS CENTER

Borsigstrae 9D-93092 Barbing Germany  
Tel: +49 (0) 9401 911 330 Fax: +49 (0) 9401 911 3329  
Email: parts@noblelifteurope.com